

## ORGANIZING COMMITTEE

### Paula Marques Alves

Animal Cell Technology Unit, IBET/ITQB-UNL  
Apartado 12  
2780-901 Oeiras  
Portugal  
Tel.: +351 21 4469421  
E-mail: marques@ibet.pt

### Christa Burger

Merck  
Discovery Technologies, Cellular Pharmacology  
Frankfurter Straße 250, Postcode A046/201  
64293 Darmstadt  
Germany  
Tel +49 6151 72 6032  
Email: christa.burger@merckgroup.com

### Hansjörg Hauser

Helmholtz Centre for Infection Research (HZI)  
Inhoffenstrasse 7  
38124 Braunschweig  
Germany  
Tel.: +49 531 6181 5000  
Email: hha@helmholtz-hzi.de

## FEE

**Registration until June 30<sup>th</sup>:** 810 Euros for academic participants and 1350 Euros for industry participants.

**Registration after June 30<sup>th</sup>:** 900 Euros for academic participants and 1500 Euros for industry participants.

The fee covers course registration and materials (book), accommodation in two-bed rooms (shared with another participant), meals, transportation from/to Barcelona airport (see the time schedule for the bus below) as well as the social event. **Participants have the possibility to be hosted in single room (limited to availability) at an extra cost of 125 Euros.**

A **limited number of grants**, covering the Course fee (not travel cost), are provided by ESACT. Applicants to the grants should indicate it in the Course application, together with a motivation statement. Priority will be given to young PhD students from Academia. **Only applications received before June 30<sup>th</sup> will be eligible for receiving a grant.**

## AIM

ESACT (European Society for Animal Cell Technology) offers a training course that covers all critical aspects of mammalian cell based screens for the identification of biologically active compounds.

## COURSE OUTLINE

The aim of the course is to train interested individuals (Lab managers, Scientists, Post-Docs, PhD students and Engineers) from Industry and Academia. We offer basic and pharmaceutical industry know-how to a broader community.

The course will cover the following topics:

1. **Target Identification and validation:** assays for target identification
2. **Preclinical testing:** role of cell models and animal models during drug development
3. **Assay Development and validation:** criteria for a good cell assay for each stage/question
4. **Cell line selection:** choose the best cell line for the purpose and assay
5. **Cell material production and validation:** reproducible cell material production and validation: cultivation/isolation, cell stocks, plate production
6. **Frequently used cellular HTS assays:** points to consider for assays as binding, FLIPR, receptor signalling, reporter, growth, localization
7. **Complex cellular assays:** HCS and experience with 3D and si-RNA screens
8. **Equipment and logistic:** automation, data storage and data analysis

The program has slots dedicated to the preparation and presentation of case studies by participants, and discussion groups with the lecturers.

## LECTURERS

Confirmed lecturers include: Rosalia Arrebola (Sanofi, France), Catarina Brito (iBET, Portugal), Christa Burger (Merck, Germany), Hansjörg Hauser (HZI, Germany), Stephanie Hennen (Uni Bonn, Germany), Eberhard Krauß (VIB Headquarters, Belgium), Heinz Ruffner (Novartis, Switzerland) and Urs Lüthi (Actelion, Switzerland). Other information can be found in [www.esact.org](http://www.esact.org).



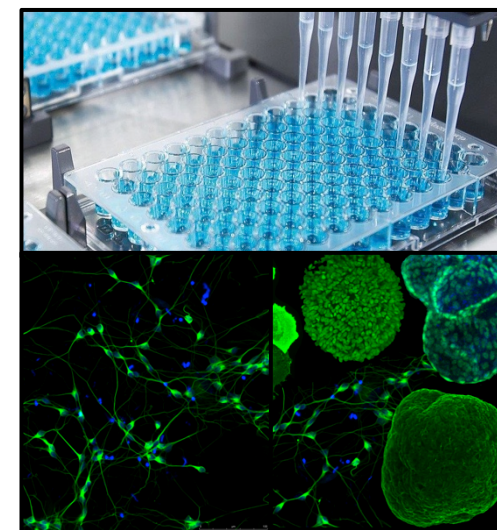
## CELLS FOR COMPOUND SCREENING 2015

*Learn about high quality cell source and production, cellular assay optimization and cell assay applications*

Second edition

September 23<sup>rd</sup> to 26<sup>th</sup>, 2015

Llafranc, Costa Brava / Spain



Photos: [www.ibet.pt](http://www.ibet.pt)

With the contribution of:



## PROGRAM

Time	Wednesday 23 <sup>rd</sup> Sep	Thursday 24 <sup>th</sup> Sep	Friday 25 <sup>th</sup> Sep	Saturday 26 <sup>th</sup> Sep
08:00-09:00	Arrival to Barcelona or Girona airports and transfer to Hotel Terramar in Llafranc  Check-in in Hotel			Group Presentations and discussions
09:00-10:00		Part 1	Part 4	Break
10:00-11:00		Cell source and cell supply	Complex cell assays	
11:00-12:00			Break	Feedback and time for final questions
12:00-13:00		Free time	Part 5	
13:00-13:30		Lunch		Lunch and free time
15:00-16:00			Part 2	Part 6
16:00-17:00		Target identification /validation	High content screens	
	Introduction and Grouping of participants	Break		
17:30-18:30		Part 3	Part 7	
18:30-19:00	Dinner	Cellular assay types and development	Transgenic animals	
19:00-19:30			Interaction between partners	
20:00		Dinner		

## LOCATION AND TRAVEL INFORMATION

The course will be held in Hotel Terramar, a three star hotel ([www.hterramar.com](http://www.hterramar.com)) in a small town named Llafranc in the heart of Costa Brava, Girona, Spain. The hotel is right on a very nice sandy beach, providing a cosy and relaxing atmosphere for the participants. Weather in Llafranc at this time of the year is generally pleasant. Travel organization to the meeting is of participants responsibility, ensuring their participation to the full Course. Access by road from Girona airport (30 min) or Barcelona airport (90 min) is suggested.

**IMPORTANT NOTE:** ONE BUS will be leaving from Barcelona airport at 14h on Wednesday 23<sup>rd</sup> September to drive participants to Hotel Terramar at Llafranc. On Saturday 26<sup>th</sup> of September, ONE BUS will be leaving from Hotel Terramar at 15h to drive participants to Barcelona airport. Participants should arrange their traveling accordingly or alternatively arrange for their transportation of their own.



**Cells for Compound Screening course 2014  
1<sup>st</sup> edition**



**Llafranc, Costa Brava / Spain**

## REGISTRATION and CONTACT

**Registration deadline is August 15, 2015**  
**The number of participants is limited to 30**  
 Updated information will be available at ESACT website ([www.esact.org](http://www.esact.org))

### Contact for registration:

António Roldão  
 ESACT Officer  
 ACT Unit, IBET/ITQB-UNL  
 Apartado 12  
 2780-901 Oeiras  
 Portugal  
 Tel.: +351 21 446 94 17  
 E-mail: [roldao@esact.org](mailto:roldao@esact.org)